

General Dental Services

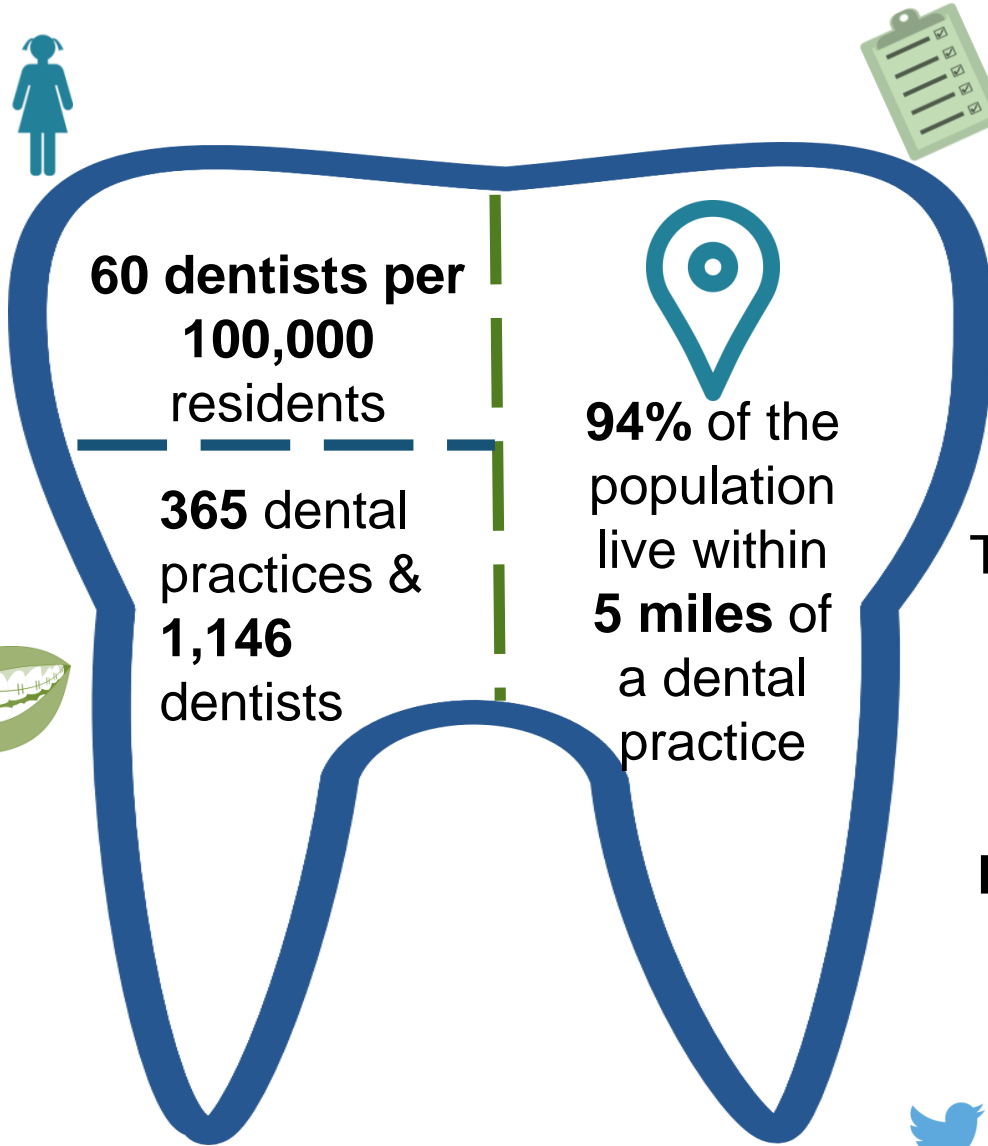
Almost **76,000 children** received **dental treatment** in excess of the basic treatments, a **rise of 47%** on 2020/21.



Similarly **45% more adults** were seen in 2021/22



Females (70%) are more likely to be registered than **Males (64%)**



67% of the population are **registered** with a health service dentist (**72%** of **children**)



The net cost of primary care dental services was **£87.0m** with an additional **£43.7m** in **Covid-19 Support Payments**. There was a further **£13.1m** in **Patient Contribution**