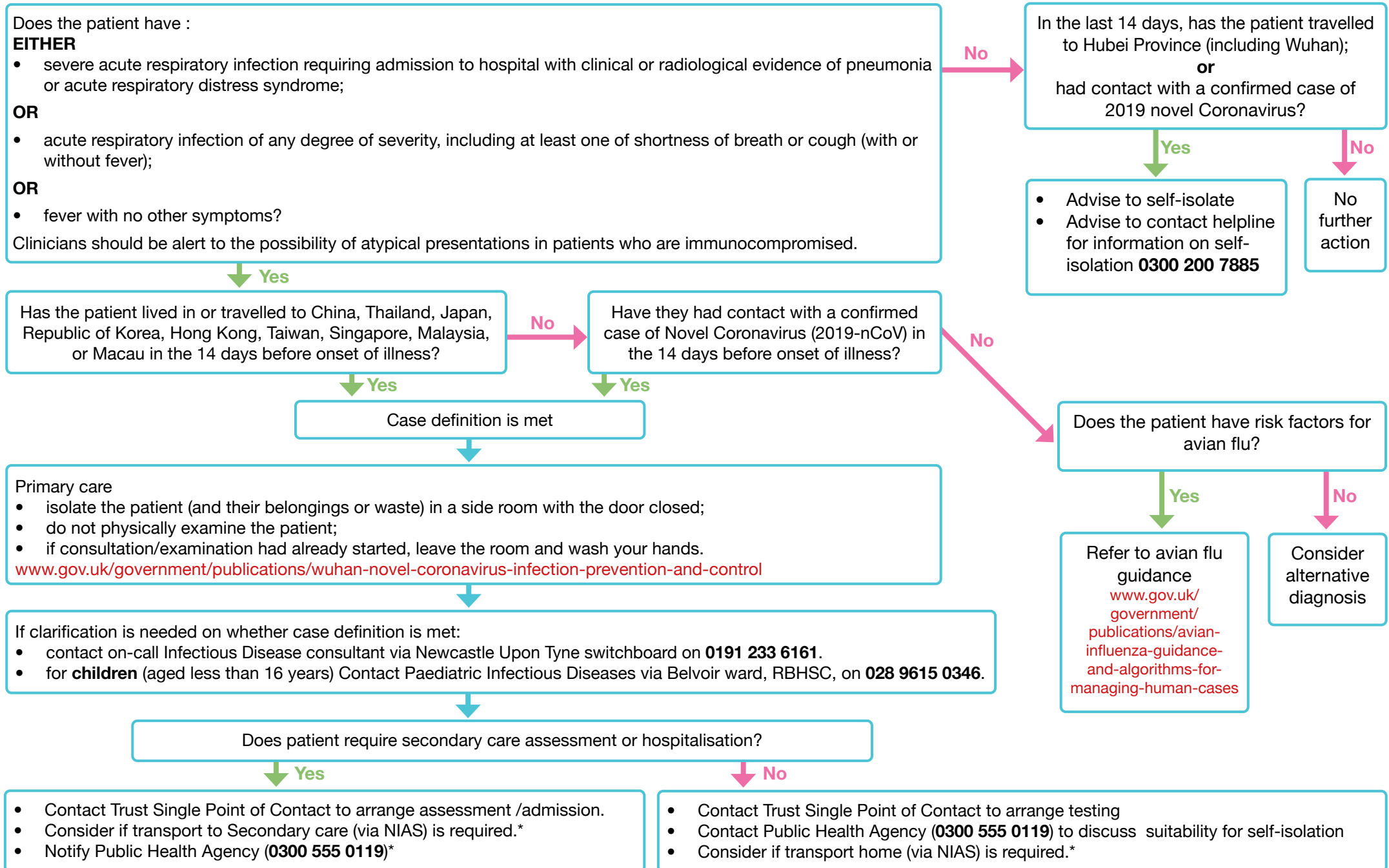


Primary care pathway

Management of suspected cases of Novel Coronavirus (2019-nCoV) acute respiratory disease (primary care) v2.0

For FURTHER INFORMATION FOLLOW PRIMARY CARE GUIDANCE www.gov.uk/government/publications/wn-cov-guidance-for-primary-care



*Private transport can only be used if patient can drive themselves or if driver has already had prior exposure to patient. Patient should not walk home or use taxis/public transport.