

Contents

[Figure 1a: Quarterly Health Service Sight Tests, 2003 to 2016 - non-zero y-axis](#)

[Figure 1b: Quarterly Health Service Vouchers 2003 to 2016 - non-zero y-axis](#)

[Figure 1c: Quarterly Health Service Repair/Replacements 2003 to 2016 - non-zero y-axis](#)

[Number of Health Service Sight Tests, Vouchers and Repair/Replacements in Northern Ireland by Quarter](#)

[Table 1: Number of Health Service Sight Tests, Vouchers and Repair/Replacements by Payment Month from January 2008](#)

[Table 2: Domiciliary Visits from 2003](#)

[Table 3: Health Service Sight Tests by Age and Rate per 1,000 Population from 2008](#)

[Table 4: Health Service Vouchers by Age and Rate per 1,000 Population from 2008](#)

[Table 5: Health Service Repairs/Replacements by Age and Rate per 1,000 Population from 2008](#)

[Table 6: Number of Sight Tests, Vouchers and Repair/Replacements and Rate Per 1,000 Population by Area \(1 April 2016 to 30 June 2016\)](#)

[Notes](#)

Figure 1a: Quarterly Health Service Sight Tests, 2003 to 2016 - non-zero y-axis

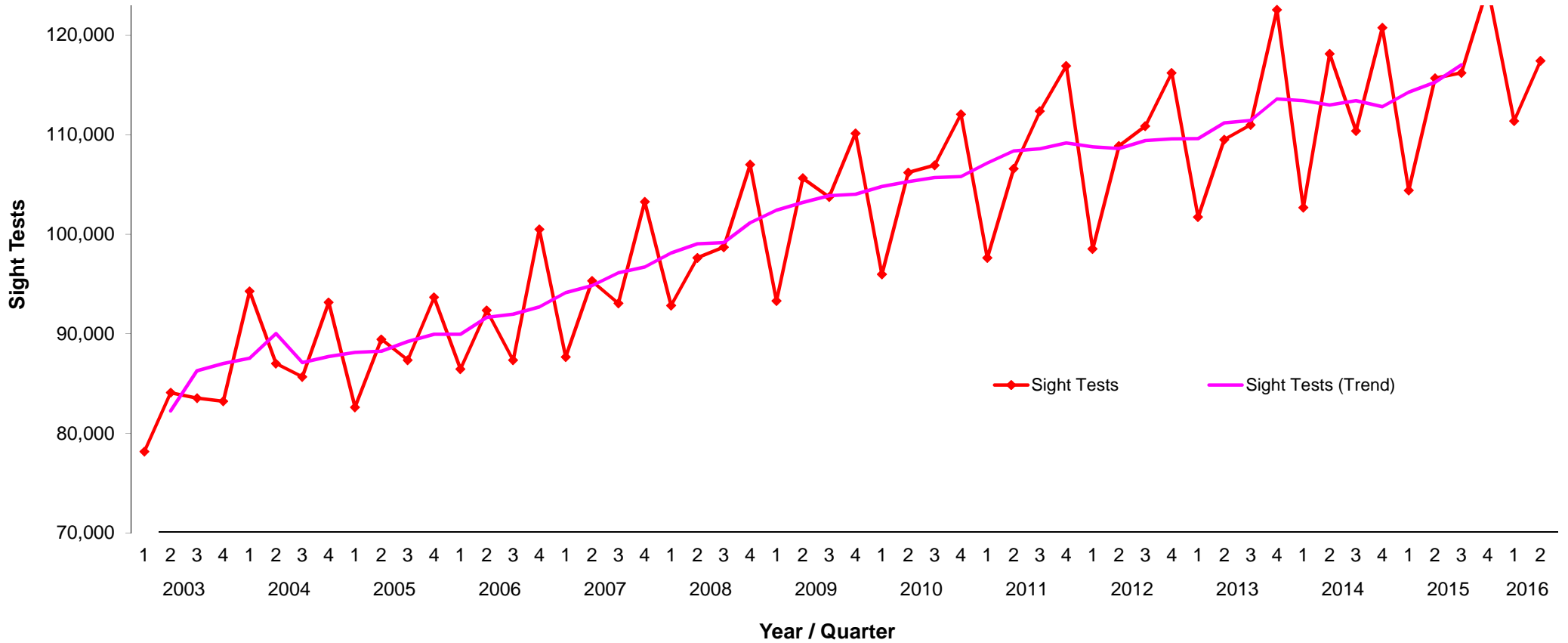


Figure 1b: Quarterly Health Service Vouchers 2003 to 2016 - non-zero y-axis

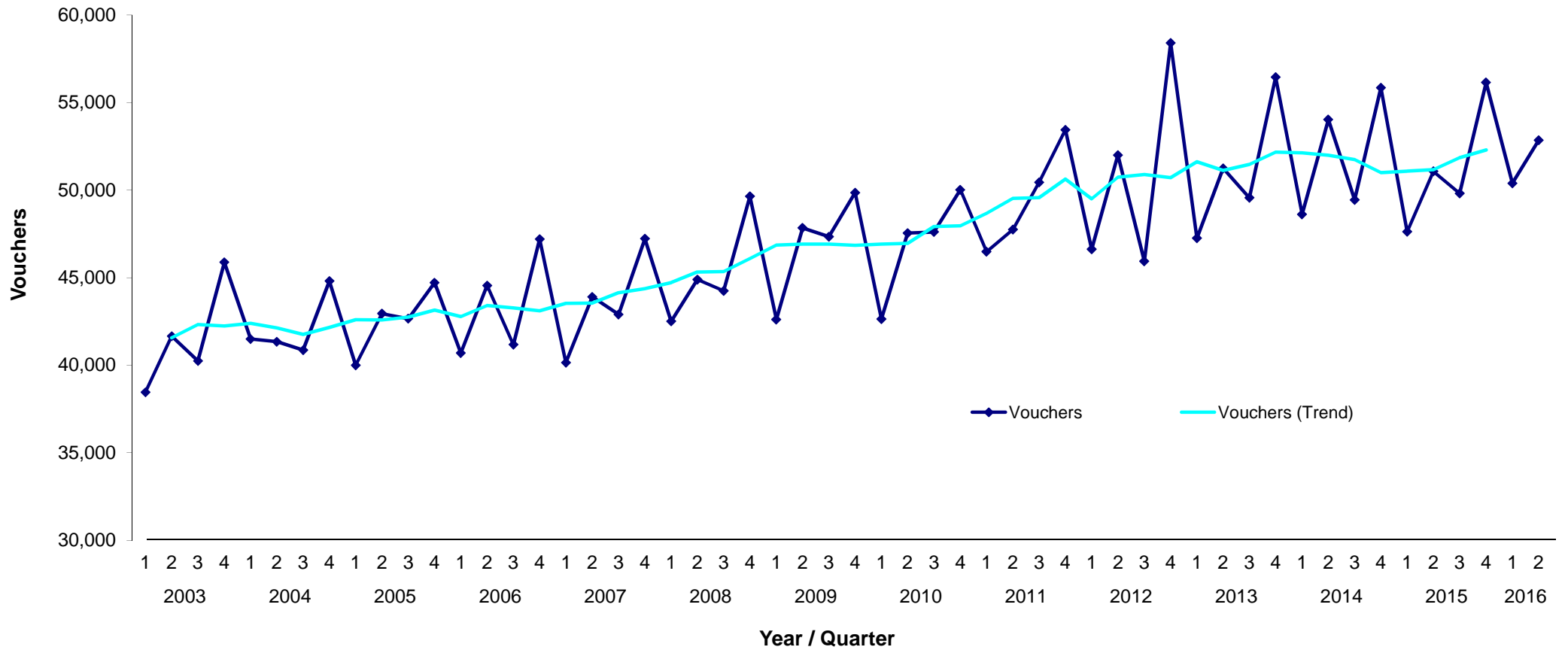
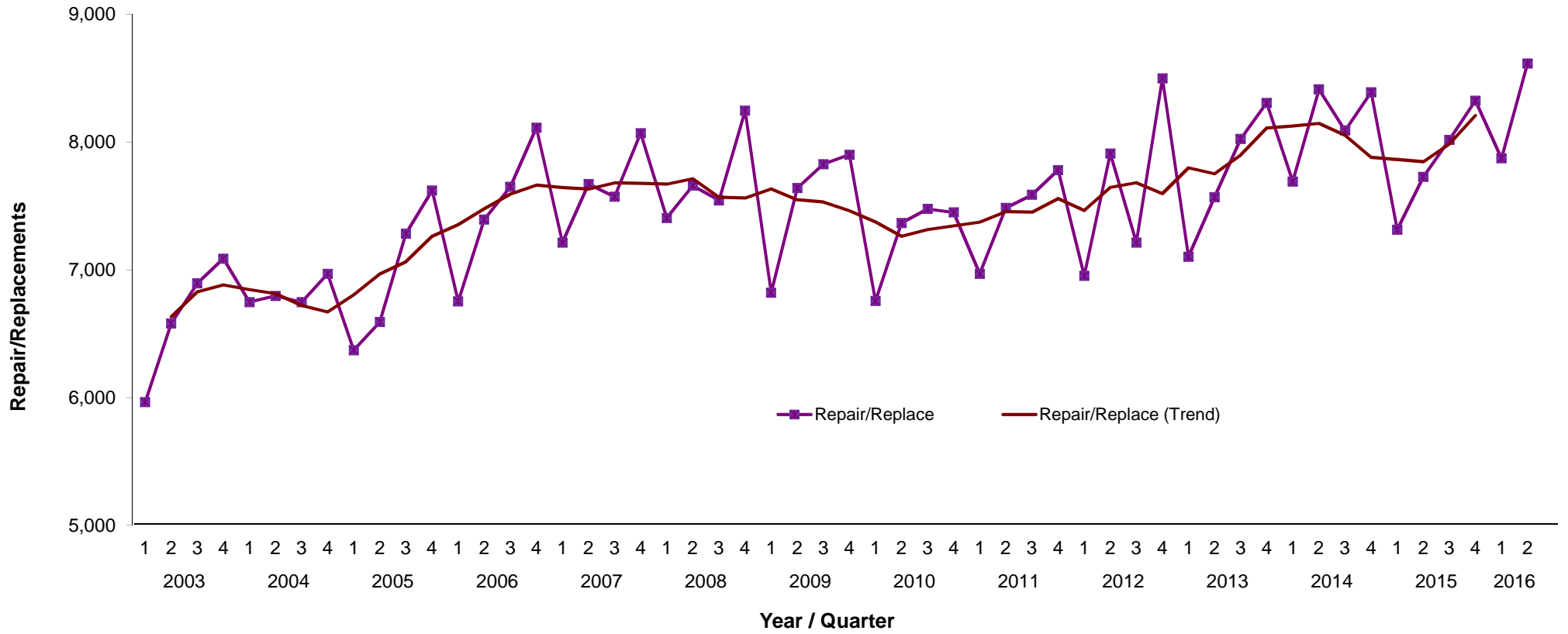


Figure 1c: Quarterly Health Service Repair/Replacements 2003 to 2016 - non-zero y-axis



Number of Health Service Sight Tests, Vouchers and Repair/Replacements in Northern Ireland by Quarter

Year	Quarter	Sight Tests	Vouchers	Repairs/ Replacements	Sight Test Rolling Average	Vouchers Rolling Average	Repair/Replacement Rolling Average
2003	1	78,165	38,466	5,966			
	2	84,086	41,667	6,582	82,254	41,567	6,633
	3	83,537	40,251	6,896	86,283	42,327	6,829
2004	4	83,228	45,885	7,089	87,015	42,249	6,883
	1	94,279	41,506	6,749	87,552	42,404	6,846
	2	87,016	41,355	6,798	90,036	42,136	6,817
	3	85,685	40,871	6,748	87,121	41,760	6,723
2005	4	93,165	44,810	6,971	87,728	42,159	6,671
	1	82,617	40,005	6,373	88,147	42,608	6,805
	2	89,445	42,951	6,593	88,271	42,586	6,968
	3	87,361	42,664	7,284	89,230	42,760	7,064
2006	4	93,659	44,723	7,623	89,956	43,161	7,264
	1	86,453	40,700	6,754	89,951	42,790	7,356
	2	92,350	44,557	7,396	91,663	43,413	7,479
	3	87,342	41,180	7,651	91,969	43,274	7,594
2007	4	100,506	47,213	8,114	92,711	43,113	7,663
	1	87,677	40,146	7,215	94,144	43,543	7,644
	2	95,318	43,911	7,673	94,836	43,548	7,633
	3	93,073	42,903	7,573	96,130	44,139	7,681
2008	4	103,276	47,231	8,071	96,708	44,386	7,678
	1	92,853	42,512	7,407	98,115	44,724	7,671
	2	97,631	44,898	7,661	99,046	45,329	7,715
	3	98,698	44,256	7,545	99,158	45,356	7,569
2009	4	107,003	49,651	8,247	101,160	46,094	7,564
	1	93,301	42,619	6,823	102,421	46,866	7,635
	2	105,638	47,850	7,641	103,207	46,919	7,549
	3	103,741	47,345	7,829	103,873	46,925	7,533
2010	4	110,146	49,863	7,902	104,017	46,852	7,465
	1	95,966	42,642	6,758	104,815	46,919	7,377
	2	106,213	47,557	7,369	105,294	46,960	7,264
	3	106,936	47,615	7,478	105,708	47,922	7,317
2011	4	112,061	50,027	7,451	105,800	47,971	7,347
	1	97,620	46,489	6,971	107,158	48,681	7,374
	2	106,583	47,754	7,486	108,374	49,538	7,457
	3	112,369	50,455	7,589	108,600	49,571	7,453
2012	4	116,925	53,452	7,782	109,175	50,635	7,560
	1	98,522	46,624	6,955	108,802	49,505	7,466
	2	108,883	52,008	7,912	108,624	50,746	7,646
	3	110,879	45,937	7,215	109,425	50,905	7,683
2013	4	116,213	58,414	8,501	109,582	50,716	7,598
	1	101,726	47,259	7,105	109,612	51,624	7,801
	2	109,510	51,254	7,571	111,201	51,134	7,753
	3	111,000	49,568	8,026	111,438	51,475	7,900
2014	4	122,566	56,455	8,308	113,594	52,171	8,110
	1	102,674	48,622	7,693	113,442	52,142	8,127
	2	118,134	54,037	8,414	112,990	51,993	8,148
	3	110,393	49,453	8,092	113,426	51,745	8,054
2015	4	120,758	55,859	8,392	112,815	51,005	7,882
	1	104,418	47,630	7,316	114,270	51,097	7,864
	2	115,689	51,079	7,729	115,286	51,171	7,848
	3	116,213	49,819	8,019	117,027	51,864	7,987
2016	4	124,822	56,155	8,326	117,460	52,307	8,209
	1	111,382	50,401	7,874			
	2	117,421	52,852	8,617			
	3						
	4						

Table 1: Number of Health Service Sight Tests, Vouchers and Repair/Repla

Year	Month	Sight Tests	Vouchers	Repairs/ Replacements
2008	January	22,105	10,913	2,156
	February	35,439	15,542	2,636
	March	35,309	16,057	2,615
	April	31,467	14,178	2,269
	May	34,926	16,175	2,738
	June	31,238	14,545	2,654
	July	32,764	15,390	2,574
	August	28,180	11,984	2,079
	September	37,754	16,882	2,892
	October	35,761	16,697	2,851
	November	37,355	17,239	2,756
	December	33,887	15,715	2,640
2009	January	21,809	10,806	2,096
	February	35,854	15,898	2,536
	March	35,638	15,915	2,191
	April	38,240	17,496	2,621
	May	31,407	13,510	2,255
	June	35,991	16,844	2,765
	July	33,342	15,196	2,538
	August	30,877	13,921	2,302
	September	39,522	18,228	2,989
	October	36,878	17,423	2,843
	November	37,049	16,053	2,365
	December	36,219	16,387	2,694
2010	January	21,718	10,219	1,743
	February	36,952	15,465	2,319
	March	37,296	16,958	2,696
	April	35,484	16,020	2,336
	May	34,058	14,823	2,318
	June	36,671	16,714	2,715
	July	34,104	15,371	2,577
	August	32,332	14,344	2,237
	September	40,500	17,900	2,664
	October	36,485	16,851	2,529
	November	40,019	18,351	2,647
	December	35,557	14,825	2,275
2011	January	17,310	9,884	1,832
	February	40,779	18,345	2,807
	March	39,531	18,260	2,332
	April	37,585	16,671	2,464
	May	31,591	14,342	2,244
	June	37,407	16,741	2,778
	July	36,986	17,133	2,597
	August	33,843	14,718	2,078
	September	41,540	18,604	2,914
	October	37,822	17,257	2,521
	November	41,511	18,879	2,694
	December	37,592	17,316	2,567
2012	January	21,907	12,632	2,122
	February	40,605	17,365	2,467
	March	36,010	16,627	2,366
	April	36,936	16,862	2,376
	May	37,809	18,664	2,987
	June	34,138	16,482	2,549

2013	July	35,786	15,895	2,568
	August	34,595	14,891	2,240
	September	40,498	15,151	2,407
	October	39,480	19,655	2,913
	November	41,755	21,309	3,072
	December	34,978	17,450	2,516
	January	25,455	13,128	2,273
	February	37,037	16,100	2,168
	March	39,234	18,031	2,664
	April	34,516	16,019	2,288
	May	37,788	17,273	2,579
	June	37,206	17,962	2,704
2014	July	35,270	15,049	2,128
	August	35,649	17,057	3,097
	September	40,081	17,462	2,801
	October	41,052	19,138	2,825
	November	43,305	19,166	2,725
	December	38,209	18,151	2,758
	January	25,171	13,315	2,419
	February	39,333	17,286	2,704
	March	38,170	18,021	2,570
	April	40,091	18,429	2,680
	May	36,820	16,834	2,626
	June	41,223	18,774	3,108
2015	July	32,753	15,320	2,392
	August	37,633	16,877	2,763
	September	40,007	17,256	2,937
	October	41,461	19,139	2,938
	November	42,050	19,492	2,853
	December	37,247	17,228	2,601
	January	25,712	12,682	2,283
	February	40,744	17,554	2,684
	March	37,962	17,394	2,349
	April	38,208	16,943	2,458
	May	39,279	17,265	2,710
	June	38,202	16,871	2,561
2016	July	36,250	16,380	2,695
	August	38,224	15,192	2,437
	September	41,739	18,247	2,887
	October	43,715	19,035	2,875
	November	43,103	19,315	2,835
	December	38,004	17,805	2,616
	January	28,246	13,556	2,412
	February	43,175	18,653	2,880
	March	39,961	18,192	2,582
	April	39,790	17,998	2,847
	May	38,611	17,574	2,899
	June	39,020	17,280	2,871
July				
August				
September				
October				
November				
December				

Table 2: Domiciliary Visits from 2003

Year	Quarter	Number of Patients visited		Total Visits
		One or two	Three or more	
2003	1	1,216	1,826	3,042
	2	1,292	1,732	3,024
	3	1,167	1,852	3,019
	4	1,019	1,372	2,391
2004	1	1,410	2,059	3,469
	2	1,462	1,948	3,410
	3	1,267	1,863	3,130
	4	1,382	1,851	3,233
2005	1	1,291	1,709	3,000
	2	1,506	1,771	3,277
	3	1,542	1,381	2,923
	4	1,880	370	2,250
2006	1	2,386	303	2,689
	2	2,577	385	2,962
	3	2,542	471	3,013
	4	2,917	455	3,372
2007	1	2,558	232	2,790
	2	2,931	415	3,346
	3	2,674	468	3,142
	4	2,698	563	3,261
2008	1	2,661	393	3,054
	2	2,669	462	3,131
	3	2,542	498	3,040
	4	2,850	660	3,510
2009	1	2,680	570	3,250
	2	3,133	453	3,586
	3	2,859	459	3,318
	4	2,892	809	3,701
2010	1	2,266	937	3,203
	2	2,570	1,039	3,609
	3	2,464	893	3,357
	4	3,040	1,069	4,109
2011	1	2,539	904	3,443
	2	2,738	975	3,713
	3	2,532	1,078	3,610
	4	3,053	1,000	4,053
2012	1	1,957	624	2,581
	2	2,709	1,083	3,792
	3	2,602	757	3,359
	4	3,079	1,121	4,200
2013	1	2,810	897	3,707
	2	2,614	907	3,521
	3	2,636	841	3,477
	4	2,923	831	3,754
2014	1	2,445	612	3,057
	2	2,599	1,132	3,731
	3	2,623	784	3,407
	4	2,876	717	3,593
2015	1	2,454	665	3,119
	2	2,710	1,022	3,732
	3	2,636	959	3,595
	4	3031	790	3,821
2016	1	2757	768	3,525
	2	2875	821	3,696
	3			
	4			

Table 3: Health Service Sight Tests by Age and Rate per 1,000 Population from 2008

Year	Quarter	Number of Health Service Sight Tests							Rate per 1,000 Population ¹					
		All Ages	0-15	16-39	40-59	60-74	75+	Unknown	All Ages	0-15	16-39	40-59	60-74	75+
2008	1st	92,853	23,167	11,944	15,329	26,737	15,647	29	201	245	75	127	467	558
	2nd	97,631	23,760	12,793	15,313	27,856	17,870	39	212	252	80	127	487	637
	3rd	98,698	24,774	12,653	15,272	28,323	17,631	45	214	262	79	126	495	629
	4th	107,003	26,533	13,829	16,983	30,886	18,745	27	232	281	86	140	540	668
2009	1st	93,301	23,356	12,195	15,122	26,655	15,953	20	200	246	76	123	456	560
	2nd	105,638	25,300	14,017	16,692	30,366	19,240	23	227	267	87	136	519	676
	3rd	103,741	25,231	13,566	16,314	29,631	18,977	22	223	266	84	133	506	667
	4th	110,146	26,434	14,465	17,692	31,817	19,680	58	237	279	90	144	544	691
2010	1st	95,966	24,077	12,816	16,236	26,996	15,840	1	204	253	80	130	451	544
	2nd	106,213	25,117	14,140	16,715	30,136	20,104	1	226	264	88	134	503	691
	3rd	106,936	26,093	14,329	16,931	30,200	19,383	0	228	274	89	135	504	666
	4th	112,061	27,053	14,755	18,015	32,113	20,124	1	239	285	92	144	536	692
2011	1st	97,620	23,733	13,120	16,391	27,528	16,846	2	206	248	82	129	451	566
	2nd	106,583	24,798	14,717	16,911	30,440	19,715	2	225	259	92	133	499	662
	3rd	112,369	27,694	15,056	17,825	31,474	20,320	0	237	290	94	140	516	682
	4th	116,925	28,753	15,628	18,612	32,928	21,004	0	247	301	98	146	540	705
2012	1st	98,522	24,058	13,142	16,812	27,750	16,760	0	207	251	83	130	448	550
	2nd	108,883	24,769	14,832	17,695	31,223	20,363	1	228	258	93	137	504	669
	3rd	110,879	27,185	14,890	17,372	30,941	20,491	0	233	283	93	135	499	673
	4th	116,213	28,238	15,538	18,421	32,447	21,567	2	244	294	98	143	524	708
2013	1st	101,726	24,794	13,795	16,829	28,431	17,877	0	212	258	87	129	450	576
	2nd	109,510	25,858	14,871	17,609	30,794	20,378	0	229	269	94	135	488	657
	3rd	111,000	27,349	14,383	17,597	31,093	20,578	0	232	285	91	135	492	663
	4th	122,566	30,034	16,270	19,211	34,257	22,794	0	256	313	103	147	542	735
2014	1st	102,674	25,372	13,806	16,937	28,946	17,613	0	213	263	87	129	450	554
	2nd	118,134	28,187	15,869	18,757	33,166	22,155	0	245	292	100	142	515	696
	3rd	110,393	27,815	14,009	16,935	30,655	20,978	1	229	289	88	129	476	659
	4th	120,758	29,644	15,742	18,491	34,509	22,371	1	250	308	99	140	536	703
2015	1st	104,418	26,249	13,643	16,675	29,628	18,223	0	215	271	86	126	452	564
	2nd	115,689	27,692	14,752	18,093	32,937	22,215	0	238	286	93	136	502	688
	3rd	116,213	29,662	14,550	17,410	32,527	22,064	0	239	306	92	131	496	683
	4th	124,822	31,119	15,490	19,133	35,975	23,105	0	257	321	97	144	549	715
2016	1st	111,382	28,082	14,139	17,434	31,982	19,745	0	227	288	89	130	477	599
	2nd	117,421	29,073	14,598	17,763	33,504	22,483	0	240	298	92	133	499	682
	3rd													
	4th													

¹Rates are calculated using the population registered in Northern Ireland for Health Service treatments at 1st July - the mid-point for each year.

Table 4: Health Service Vouchers by Age and Rate per 1,000 Population from 2008

Year	Quarter	Number of Health Service Vouchers							Rate per 1,000 Population ¹					
		All Ages	0-15	16-39	40-59	60-74	75+	Unknown	All Ages	0-15	16-39	40-59	60-74	75+
2008	1st	42,512	14,603	8,100	8,985	6,293	4,520	11	92	155	51	74	110	161
	2nd	44,898	15,372	8,643	8,908	6,667	5,299	9	97	163	54	74	117	189
	3rd	44,256	15,568	8,208	8,830	6,669	4,975	6	96	165	51	73	117	177
	4th	49,651	17,231	9,353	10,042	7,444	5,574	7	108	182	58	83	130	199
2009	1st	42,619	14,911	8,188	8,854	6,175	4,486	5	92	157	51	72	106	158
	2nd	47,850	15,943	9,243	9,676	7,338	5,640	10	103	168	58	79	125	198
	3rd	47,345	15,933	9,036	9,696	7,114	5,563	3	102	168	56	79	122	195
	4th	49,863	16,519	9,713	10,694	7,439	5,495	3	107	174	60	87	127	193
2010	1st	42,642	14,467	7,969	9,485	6,215	4,506	0	91	152	50	76	104	155
	2nd	47,557	15,625	9,201	10,049	7,016	5,665	1	101	164	57	80	117	195
	3rd	47,615	15,810	9,223	10,041	7,050	5,491	0	101	166	57	80	118	189
	4th	50,027	16,718	9,804	10,731	7,271	5,502	1	107	176	61	86	121	189
2011	1st	46,489	15,460	8,955	10,273	6,839	4,961	1	98	162	56	81	112	167
	2nd	47,754	15,830	9,443	9,794	7,217	5,469	1	101	166	59	77	118	184
	3rd	50,455	16,815	9,926	10,545	7,287	5,882	0	107	176	62	83	119	198
	4th	53,452	17,769	10,762	11,468	7,687	5,766	0	113	186	67	90	126	194
2012	1st	46,624	15,527	8,903	10,541	6,779	4,874	0	98	162	56	82	109	160
	2nd	52,008	17,304	10,286	11,028	7,530	5,859	1	109	180	65	86	122	192
	3rd	45,937	15,517	8,940	9,608	6,682	5,189	1	96	162	56	75	108	170
	4th	58,414	19,649	11,658	12,251	8,238	6,616	2	123	205	73	95	133	217
2013	1st	47,259	16,035	9,410	10,353	6,590	4,871	0	99	167	59	79	104	157
	2nd	51,254	17,250	10,274	10,787	7,266	5,675	2	107	180	65	83	115	183
	3rd	49,568	17,107	9,435	10,555	7,089	5,381	1	103	178	59	81	112	173
	4th	56,455	19,188	11,288	12,026	7,963	5,989	1	118	200	71	92	126	193
2014	1st	48,622	16,810	9,577	10,722	6,722	4,791	0	101	174	60	81	104	151
	2nd	54,037	18,500	10,893	11,317	7,522	5,802	0	112	192	69	86	117	182
	3rd	49,453	17,826	9,329	10,172	6,811	5,314	1	102	185	59	77	106	167
	4th	55,859	19,991	11,293	11,489	7,527	5,559	0	116	207	71	87	117	175
2015	1st	47,630	17,089	9,546	10,238	6,299	4,457	1	98	177	60	77	96	138
	2nd	51,079	18,276	9,971	10,742	6,852	5,238	0	105	189	63	81	104	162
	3rd	49,819	18,464	9,468	9,871	6,724	5,292	0	102	191	60	74	103	164
	4th	56,155	20,297	11,026	11,675	7,673	5,484	0	115	210	69	88	117	170
2016	1st	50,401	18,218	9,956	10,786	6,812	4,629	0	103	187	63	81	102	141
	2nd	52,852	19,869	10,247	10,615	7,045	5,075	1	108	204	64	79	105	154
	3rd													
	4th													

¹Rates are calculated using the population registered in Northern Ireland for Health Service treatments at 1st July - the mid-point for each year.

Table 5: Health Service Repairs/Replacements by Age and Rate per 1,000 Population from 2008

Year	Quarter	Number of Health Service Repair/Replacements							Rate per 1,000 Population ¹					
		All Ages	0-15	16-39	40-59	60-74	75+	Unknown	All Ages	0-15	16-39	40-59	60-74	75+
2008	1st	7,407	7,231	45	38	24	66	3	16	77	0	0	0	2
	2nd	7,661	7,455	42	50	32	81	1	17	79	0	0	1	3
	3rd	7,545	7,373	39	42	26	62	3	16	78	0	0	0	2
	4th	8,247	8,024	53	52	29	89	0	18	85	0	0	1	3
2009	1st	6,823	6,674	29	28	26	64	2	15	70	0	0	0	2
	2nd	7,641	7,449	35	28	40	87	2	16	79	0	0	1	3
	3rd	7,829	7,682	34	33	15	62	3	17	81	0	0	0	2
	4th	7,902	7,704	38	29	37	81	13	17	81	0	0	1	3
2010	1st	6,758	6,563	48	46	32	53	16	14	69	0	0	1	2
	2nd	7,369	7,199	43	30	35	61	1	16	76	0	0	1	2
	3rd	7,478	7,280	57	33	37	69	2	16	77	0	0	1	2
	4th	7,451	7,281	35	31	29	73	2	16	77	0	0	0	3
2011	1st	6,971	6,786	27	50	26	78	4	15	71	0	0	0	3
	2nd	7,486	7,326	29	44	23	63	1	16	77	0	0	0	2
	3rd	7,589	7,448	35	39	16	48	3	16	78	0	0	0	2
	4th	7,782	7,630	40	30	28	54	0	16	80	0	0	0	2
2012	1st	6,955	6,781	42	30	38	64	0	15	71	0	0	1	2
	2nd	7,912	7,732	39	34	35	72	0	17	81	0	0	1	2
	3rd	7,215	7,073	32	34	24	52	0	15	74	0	0	0	2
	4th	8,501	8,327	39	38	33	64	0	18	87	0	0	1	2
2013	1st	7,105	6,932	32	32	32	77	0	15	72	0	0	1	2
	2nd	7,571	7,388	47	41	33	60	2	16	77	0	0	1	2
	3rd	8,026	7,866	21	30	39	70	0	17	82	0	0	1	2
	4th	8,308	8,130	33	38	35	72	0	17	85	0	0	1	2
2014	1st	7,693	7,542	42	31	22	56	0	16	78	0	0	0	2
	2nd	8,414	8,253	43	32	29	56	0	17	86	0	0	0	2
	3rd	8,092	7,944	39	36	24	49	0	17	82	0	0	0	2
	4th	8,392	8,230	37	34	29	59	3	17	85	0	0	0	2
2015	1st	7,316	7,146	31	45	33	60	1	15	74	0	0	1	2
	2nd	7,729	7,604	34	30	24	37	0	16	79	0	0	0	1
	3rd	8,019	7,883	29	37	31	39	0	16	81	0	0	0	1
	4th	8,326	8,197	25	33	32	38	1	17	85	0	0	0	1
2016	1st	7,874	7,725	32	48	25	44	0	16	79	0	0	0	1
	2nd	8,617	8,469	27	39	37	44	1	18	87	0	0	1	1
	3rd													
	4th													

¹Rates are calculated using the population registered in Northern Ireland for Health Service treatments at 1st July - the mid-point for each year.

Table 6: Number of Sight Tests, Vouchers and Repair/Replacements and Rate Per 1,000 Population by Area (1 April 2016 to 30 June 2016)

	Population as at 1st July 2016	Sight Tests		Vouchers		Repairs/ Replacements	
		Number	Rate per 1,000 Population ¹	Number	Rate per 1,000 Population ¹	Number	Rate per 1,000 Population ¹
Northern Ireland	1,957,400	117,421	240	52,852	108	8,617	18
Belfast HSC Trust	374,900	21,772	232	9,965	106	1,406	15
Belfast	304,300	18,173	239	8,880	117	1,195	16
Castlereagh	70,600	3,599	204	1,085	61	211	12
Northern HSC Trust	484,900	30,516	252	12,748	105	2,267	19
Antrim	56,200	2,615	186	1,220	87	242	17
Ballymena	69,200	6,045	350	2,493	144	411	24
Ballymoney	32,000	1,108	139	487	61	86	11
Carrickfergus	40,500	1,415	140	478	47	63	6
Coleraine	59,500	4,666	314	1,993	134	310	21
Cookstown	40,100	1,739	173	835	83	196	20
Larne	33,200	1,762	212	692	83	137	17
Magherafelt	48,100	3,256	271	1,528	127	342	28
Moyle	17,800	706	158	277	62	75	17
Newtownabbey	88,300	7,204	326	2,745	124	405	18
South Eastern HSC Trust	365,900	23,204	254	8,921	98	1,403	15
Ards	81,000	6,492	320	2,197	108	256	13
Down	74,100	3,787	204	1,796	97	374	20
Lisburn	128,400	7,043	219	2,754	86	535	17
North Down	82,300	5,882	286	2,174	106	238	12
Southern HSC Trust	405,200	22,934	226	10,989	108	1,833	18
Armagh	67,400	2,549	151	970	58	220	13
Banbridge	51,200	2,173	170	898	70	182	14
Craigavon	104,300	8,300	318	3,910	150	430	16
Dungannon	66,600	3,408	205	1,704	102	382	23
Newry & Mourne	115,700	6,504	225	3,507	121	619	21
Western HSC Trust	326,100	18,995	233	10,229	125	1,708	21
Derry	123,800	7,921	256	4,128	133	541	17
Fermanagh	68,000	3,662	216	1,896	112	304	18
Limavady	35,000	1,722	197	987	113	96	11
Omagh	55,200	3,702	268	2,029	147	457	33
Strabane	44,200	1,988	180	1,189	108	310	28

¹Rates are calculated using the population registered in Northern Ireland for Health Service treatments at 1st July

Notes

1. Ophthalmic statistics are compiled from claims received and paid through the FPS Ophthalmic Payment System. The system records claims for Health Service sight tests, vouchers and repairs and automates the payment process. The system is designed to be a payment system rather than an information system and there may be anomalies in the data due to scanning errors. However where feasible quality checks have been carried out and information sought from the original paper form where possible.
2. All data in this report relates to the date the activity was processed and paid on the system rather than activity date. The time periods for submission of payment claims are six months from the date of test for sight test claims and three months from the date of supply for vouchers and repair/replacement claims.
3. Data excludes sight tests to prisoners in Northern Ireland.
4. Population estimates and rates are calculated using the population registered in Northern Ireland for Health Service treatments at July - the mid-point for each year unless otherwise stated.
5. Further reports, tables and charts are available at: <http://www.hscbusiness.hscni.net/services/1807.htm>
6. Data for other parts of the UK are available at:
England: [http://www.hscic.gov.uk/searchcatalogue?topics=1/Primary care services/Eye care services&sort=Most recent&size=10&page=1#top](http://www.hscic.gov.uk/searchcatalogue?topics=1/Primary%20care%20services/Eye%20care%20services&sort=Most%20recent&size=10&page=1#top)
Wales: <http://wales.gov.uk/topics/statistics/headlines/health2012/120531/?lang=en>
Scotland: <http://www.isdscotland.org/Health-Topics/Eye-Care/Publications/>
7. Further information on entitlement to Health Service tests, vouchers and repairs in Northern Ireland can be found at: <http://www.hscbusiness.hscni.net/services/1780.htm>
8. Further information on the statistics provided in this publication can be obtained from the BSO Information and Registration Unit:
Responsible Statistician: Mr Sandy Fitzpatrick
Telephone: 028 9536 3687
E-mail: info.bso@hscni.net